

**NOTICE OF AVAILABILITY FOR PUBLIC REVIEW
PARTIALLY REVISED DRAFT TIER 1 ENVIRONMENTAL IMPACT
STATEMENT/PROGRAM ENVIRONMENTAL IMPACT REPORT**

Federal Highways Administration (FHWA), California Department of Transportation (Caltrans), and South Placer Regional Transportation Authority (SPRTA) have released a Partially Revised Draft Tier 1 Environmental Impact Statement/Environmental Impact Report (Tier 1 EIS/EIR) for the Placer Parkway Corridor Preservation Project.

Proposed Action/Project: Placer Parkway Corridor Preservation Project (FHWA Report Number: FHWA-CA-DEIS 2007-46 and State Clearinghouse Number: 2003092069).

Project Description: FHWA, Caltrans, and SPRTA propose to select and preserve a corridor for the future construction of Placer Parkway, a new east-west roadway linking State Route (SR) 70/99 in Sutter County east to SR 65 in Placer County (see Figure 1). Specifically, the action being considered and evaluated is to select and preserve a 500- to 1,000-foot-wide corridor in the project study area, within which the future four- or six-lane Placer Parkway may be constructed. Placer Parkway is intended to reduce anticipated congestion on both the local and regional transportation system and to advance economic development goals in south Sutter County and southwestern Placer County.

Five build alternatives and a no-build alternative are evaluated in the Tier 1 EIS/EIR (see Figure 2). Although the Parkway would be designed and construction-level impacts analyzed during Tier 2, for the purpose of the Tier 1 EIS/EIR, several assumptions have been made about potential design and configuration concepts. These assumptions would be subject to further development and refinement, and specific decisions about design of the roadway would be made during the Tier 2 process. The Parkway would be a high-speed, limited access roadway. Conceptually, interchanges would be located at SR 70/99 (at one-half mile north of Riego Road or at Sankey Road), one or two locations to be determined in southern Sutter County, Fiddymont Road, Foothills Boulevard, and SR 65 at Whitney Ranch Parkway. Access would be restricted for the 7-mile segment between Pleasant Grove Road and Fiddymont Road. The Tier 1 EIS/EIR assumes no interchanges in this segment.

The Parkway may be designed and constructed incrementally in segments. These could be built as a four-lane (interim) roadway until a six-lane segment is warranted, or as the full six-lane facility. The roadway would include a center median approximately 100 to 134 feet wide, depending on local conditions and reflecting Caltrans safety guidance. For the purposes of the Tier 1 EIS/EIR, the Parkway's opening year is assumed to be 2020.

Project Location: South Sutter County and Southwestern Placer County, California.

Tier 1 Concept: The planning for Placer Parkway involves two phases: (1) the present action, selection of a corridor (titled the Placer Parkway Corridor Preservation Project), and (2) the future selection of a precise alignment within the corridor and a decision whether or not to build the Parkway. If a build alternative is selected and pursued after the second phase, the ultimate Placer Parkway project would be constructed and operated.

Each phase will be subject to its own environmental review, a process known as "tiered" environmental review under both state and federal law. The selection of a corridor is the subject of the Tier 1 EIS/EIR. To the degree feasible the Tier 1 EIS/EIR reviews the reasonably foreseeable environmental effects of the construction and operation of the Parkway. Selection of a more precise alignment within the corridor, and construction and operation of the Parkway, will be the subject of a later, Tier 2 environmental document.

Revisions to the Draft Tier 1 EIS/EIR and Additional Analyses in the Partially Revised Draft Tier 1 EIS/EIR:

The Partially Revised Draft Tier 1 EIS/EIR serves as a supplement to the Draft Tier 1 EIS/EIR issued in June 2007, to reflect additional analyses developed since the publication of the prior draft. The Partially Revised Tier 1 EIS/EIR provides revisions to the Draft Tier 1 EIS/EIR, including updates to farmland classification data and greenhouse gas emissions. It also includes additional analyses of growth inducement, secondary and indirect impacts and cumulative impacts based on hypothetical future scenarios prepared for the U.S. Environmental Protection Agency and the U.S. Army Corps of Engineers.

Public Review and Comment Period: Comments regarding the Partially Revised Draft Tier 1 EIS/EIR shall be accepted beginning on January 30, 2009 **and must be submitted in writing by 5:00 p.m. on March 15, 2009** to Placer County Transportation Planning Agency (PCTPA) via regular mail to PCTPA, Attention: Celia McAdam, Executive Director, 299 Nevada St., Auburn, California 95603, or via email to pctpa@pctpa.net.

Scheduled Public Hearings: The public, as well as agencies and local jurisdictions, are also invited to comment on the Partially Revised Draft Tier 1 EIS/EIR at either of two public hearings:

- **February 23, 2009 – 6:00 pm** at the Veterans Memorial Community Building, 1425 Veterans Memorial Circle in Yuba City, California 95993
- **February 25, 2009 – 10:45 am** at the Placer County Board of Supervisors Chambers (The Domes), 175 Fulweiler Avenue, Auburn, California 95603

Availability of the Partially Revised Draft Tier 1 EIS/EIER for Public Review: Copies are available for review at the following locations:

Placer County Transportation Planning Agency
299 Nevada Street, Auburn, CA

Sutter County Planning Department
1130 Civic Center Blvd., Yuba City, CA

Placer County Planning Department
3091 County Center Drive, Auburn, CA

Sacramento County Planning Department
827 7th Street, Room 230, Sacramento, CA

Placer County Public Works Department
3091 County Center Drive, Auburn, CA

Roseville Public Library - Downtown
225 Taylor Street, Roseville CA

Placer County Library
350 Nevada Street, Auburn, CA

Roseville Public Library - Maidu
1530 Maidu Drive, Roseville CA

Placer County Library, Loomis
6050 Library Drive, Loomis, CA

Rocklin Library
5400 Fifth Street, Rocklin, CA

Sutter County Library, Main Branch
7504 Forbes Avenue, Yuba City, CA

Lincoln Library
590 Fifth Street, Lincoln, CA

Sutter County Library, Pleasant Grove Branch
3093 Howsley Road, Pleasant Grove, CA

Sierra College Library
5000 Rocklin Road, Rocklin, CA

Sutter County Library, Browns Branch
1248 Pacific Avenue, Rio Oso, CA

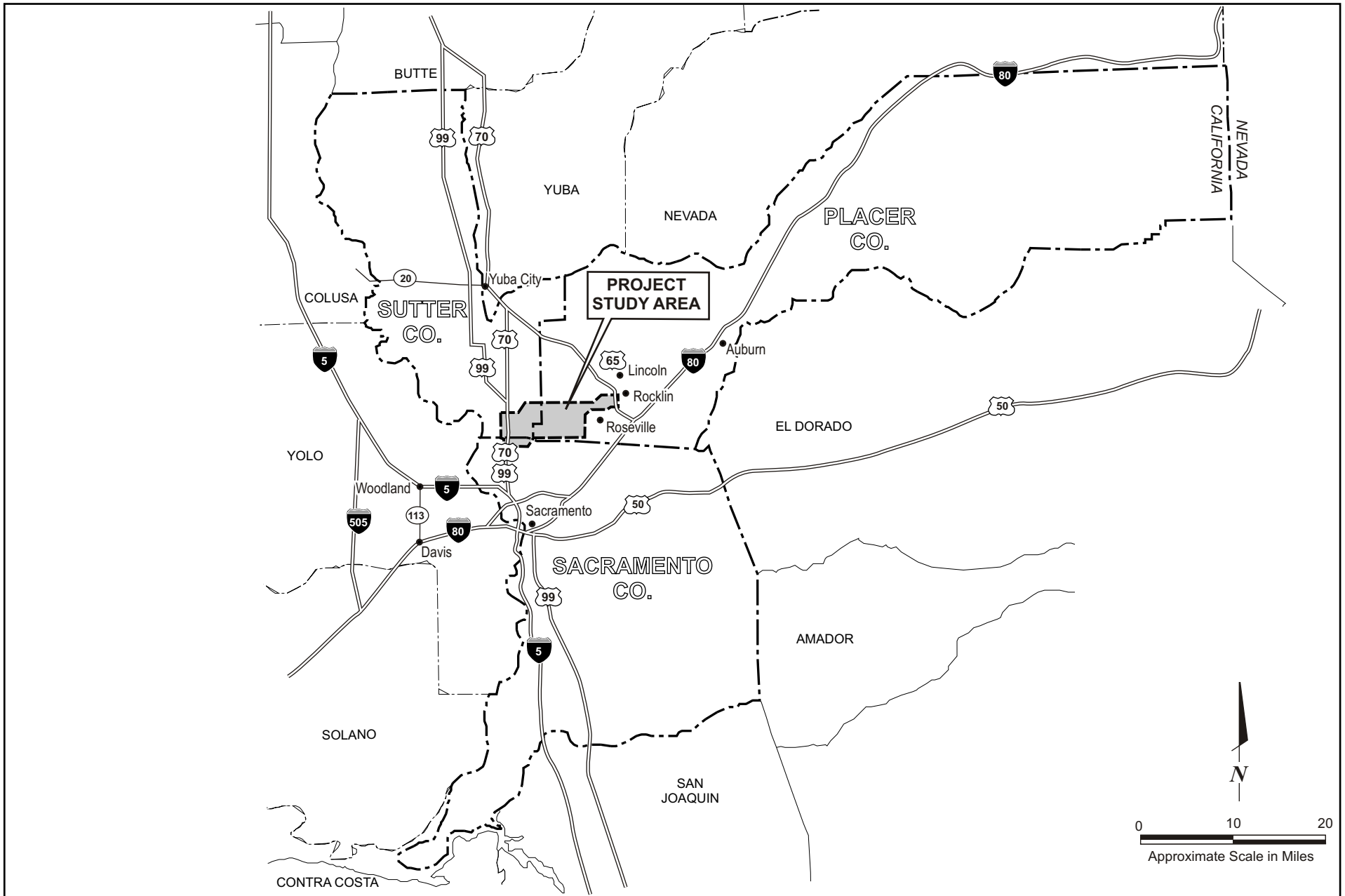
Sacramento County Library, North Natomas
2500 New Market Drive, Sacramento, CA

Sacramento County Public Library
828 I Street, Sacramento, CA

Sacramento County Library, North Highlands – Antelope
4235 Antelope Road, Antelope, CA

California State University
6000 J Street, Sacramento, CA

Copies can also be obtained electronically from PCTPA's project website at www.pctpa.net. Additional information, including documents referenced in the Partially Revised Draft Tier 1 EIS/EIR, may be obtained by contacting Celia McAdam at the Placer County Transportation Planning Agency at 530-823-4030, Monday through Friday between the hours of 9:00 a.m. and 5:00 pm.

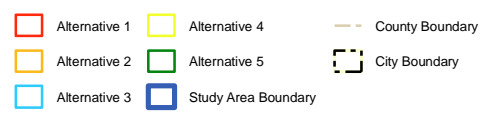
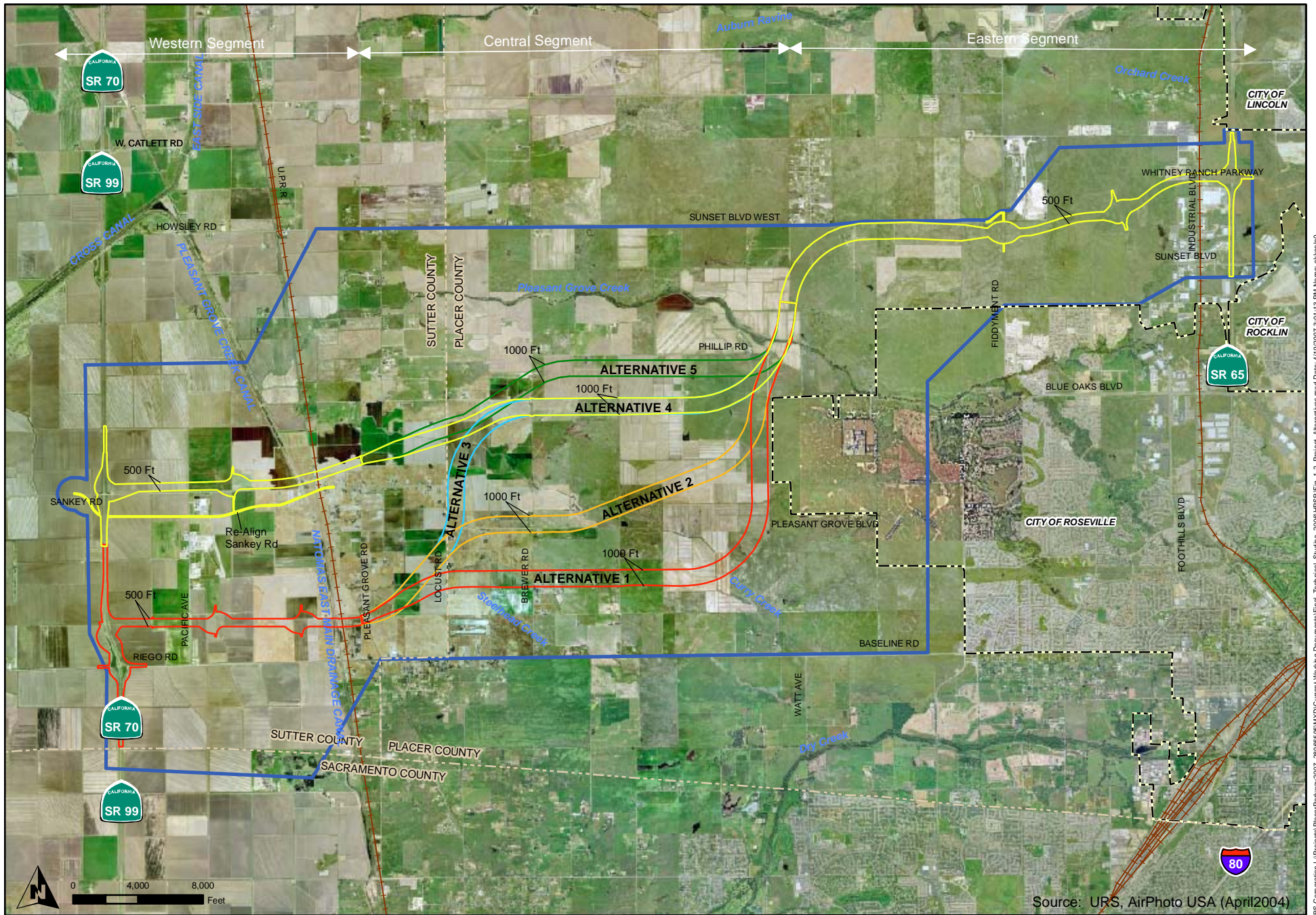


Tier 1 EIS/EIR

Project Location Map

Figure 1

January 2009



Tier 1 EIS/EIR

Project Alternatives

Figure 2
January 2009